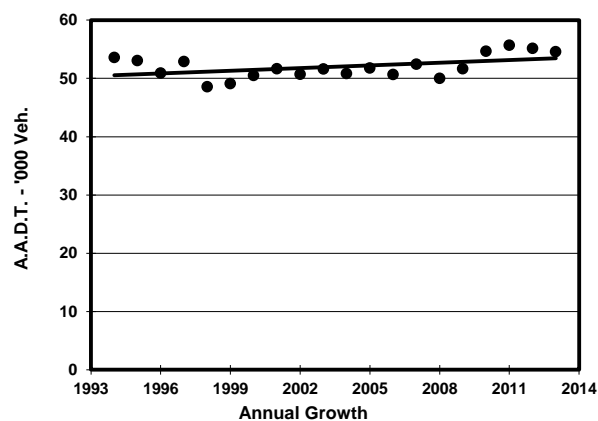
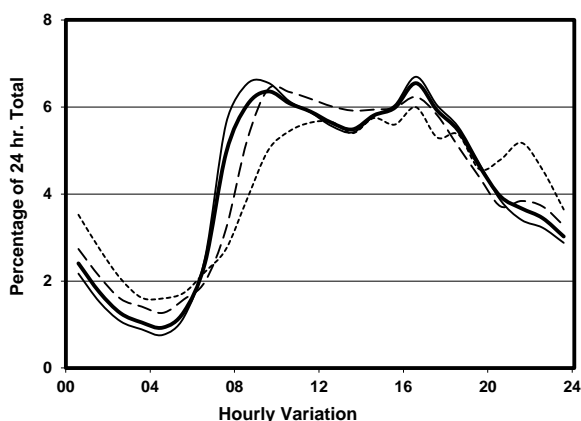
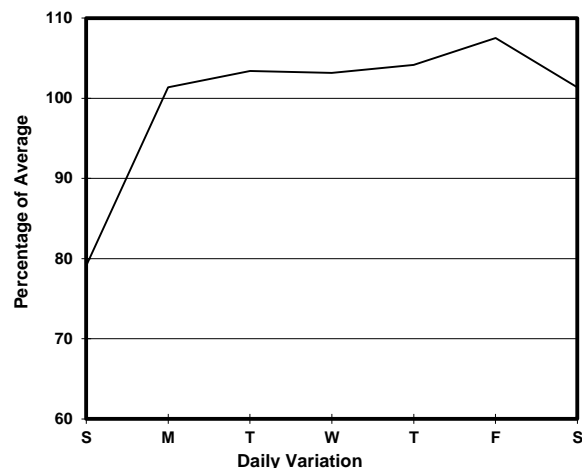
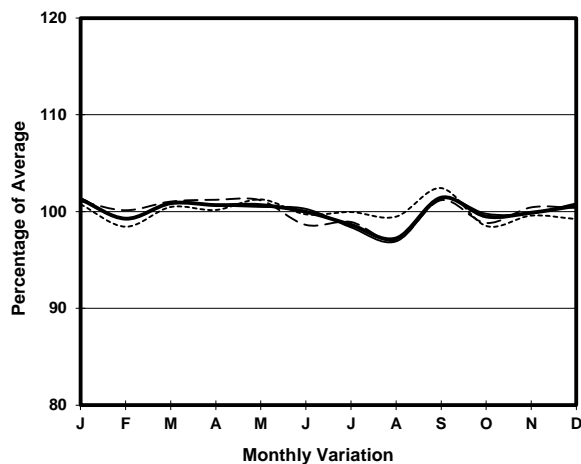


YEAR 2013
 COVERAGE (B) STATION 2215
 ROAD NETWORK MAJOR
 ROAD TYPE EXPRESSWAY

LINK ISLAND EASTERN CORRIDOR (from MONG LUNG ST to WING TAI RD INT)



1. TRAFFIC FLOW VARIATION AND GROWTH



2. TRAFFIC CHARACTERISTICS (BY DIRECTION)

Parameter	All - Day	Mon. - Fri.	Sat.	Sun.
EAST BOUND				
A.A.D.T.	26900	28210	27620	21770
R 12 / 24 - %	68.4	70.3	66.2	59.5
R 16 / 24 - %	85.7	87	83.4	80.2
AM Peak Hour	0900-1000	0900-1000	0900-1000	0900-1000
One-way flow at AM peak hour	1730	1930	1670	940
T - % (AM)	-	18.8	-	-
PM Peak Hour	1600-1700	1600-1700	1600-1700	1600-1700
One-way flow at PM peak hour	1830	1950	1820	1360
T - % (PM)	-	10.8	-	-
Prop.of commercial vehicles - 16 hr.	-	13.3	-	-
WEST BOUND				
A.A.D.T.	27700	29190	28320	21920
R 12 / 24 - %	71.9	73.3	70.6	64.1
R 16 / 24 - %	86.1	87	84.7	81.6
AM Peak Hour	0800-0900	0800-0900	0900-1000	0900-1000
One-way flow at AM peak hour	1870	2130	1920	1250
T - % (AM)	-	12.1	-	-
PM Peak Hour	1600-1700	1600-1700	1700-1800	1600-1700
One-way flow at PM peak hour	1750	1890	1690	1260
T - % (PM)	-	16.1	-	-
Prop.of commercial vehicles - 16 hr.	-	13.8	-	-

3. OTHER INFORMATION AND COMMENT

4. Vehicle classification and occupancy - Monday to Friday

Time		Class of vehicle									
		Motor Cycle	Private Car	Taxi	Private LB	PLB	Goods veh.		Non Fr. Bus	Fr. Bus	
							Light	M & H		SD	DD
0700-0800	Pro	6.7	29.7	24.2	2.2	0.0	22.6	5.9	3.9	0.2	4.6
	Ocp	1.2	1.3	1.8	9.5	0.0	1.5	1.4	15.0	1.0	46.2
0800-0900	Pro	2.7	37.4	24.4	2.2	0.0	19.3	7.6	2.8	0.0	3.5
	Ocp	1.2	1.2	1.8	4.9	0.0	1.6	1.3	16.2	0.0	52.7
0900-1000	Pro	2.7	28.6	21.6	2.4	0.0	26.7	11.2	3.1	0.1	3.6
	Ocp	1.1	1.4	1.8	3.5	0.0	1.6	1.3	1.8	1.0	23.5
1000-1100	Pro	1.7	32.2	16.5	0.5	0.0	35.2	7.9	1.2	0.1	4.7
	Ocp	1.0	1.3	1.5	1.0	0.0	1.5	1.2	6.7	1.0	15.7
1100-1200	Pro	4.1	29.4	16.7	2.2	0.0	32.7	9.1	3.2	0.1	2.6
	Ocp	1.1	1.2	1.7	1.8	0.0	1.5	1.4	3.8	1.0	23.3
1200-1300	Pro	2.8	30.8	15.1	2.5	0.0	33.6	8.5	3.9	0.1	2.7
	Ocp	1.2	1.3	1.7	4.9	0.0	1.5	1.4	9.6	1.0	24.1
1300-1400	Pro	1.9	27.4	16.1	2.6	0.0	36.6	9.9	3.1	0.1	2.5
	Ocp	1.1	1.3	1.5	4.2	0.0	1.6	1.2	6.8	1.0	24.8
1400-1500	Pro	1.5	28.7	19.3	1.1	0.0	32.2	11.7	2.6	0.1	2.9
	Ocp	1.0	1.5	1.8	1.9	0.0	1.6	1.3	2.3	1.0	21.7
1500-1600	Pro	3.4	33.4	17.0	2.6	0.0	29.1	9.6	1.8	0.1	3.1
	Ocp	1.1	1.4	1.4	4.9	0.0	1.5	1.4	15.8	1.0	18.8
1600-1700 Peak hour	Pro	2.5	31.5	22.9	2.0	0.0	27.7	7.8	2.3	0.1	3.2
	Ocp	1.1	1.3	1.3	3.8	0.0	1.5	1.2	7.3	1.0	24.2
1700-1800	Pro	6.1	36.4	20.9	2.9	0.0	22.2	5.1	2.2	0.0	4.2
	Ocp	1.1	1.3	1.8	2.3	0.0	1.5	1.3	2.9	0.0	29.4
1800-1900	Pro	3.9	48.1	18.9	0.9	0.0	19.7	2.9	2.0	0.1	3.6
	Ocp	1.0	1.3	1.8	2.5	0.0	1.4	1.6	9.6	1.0	55.3
1900-2000	Pro	6.1	57.5	17.1	0.3	0.0	10.5	2.7	2.0	0.0	3.8
	Ocp	1.1	1.4	2.0	1.0	0.0	1.6	1.5	1.7	0.0	41.4
2000-2100	Pro	4.6	44.5	29.9	0.2	0.0	8.1	2.6	2.4	0.5	7.3
	Ocp	1.1	1.4	2.1	2.0	0.0	1.5	1.5	2.4	1.0	18.0
2100-2200	Pro	4.1	38.6	38.0	0.6	0.0	9.6	2.1	0.8	0.3	5.9
	Ocp	1.2	1.4	1.9	2.0	0.0	1.6	1.3	1.3	1.0	19.1
2200-2300	Pro	3.9	43.1	39.9	0.0	0.0	4.8	0.7	1.0	0.2	6.4
	Ocp	1.2	1.6	1.7	0.0	0.0	1.2	1.0	1.3	1.0	19.3
16 hours	Pro	3.5	35.2	21.5	1.7	0.0	24.5	7.2	2.5	0.1	3.8
	Ocp	1.1	1.3	1.7	3.9	0.0	1.5	1.3	7.3	1.0	28.3

Legend

Pro. Proportion of vehicles in % (Sum may not add up to 100% due to figure rounding)
Ocp. Average occupancy of vehicles
M&H Medium and Heavy